

MAGNOLIA DRIVE at LAFAYETTE STREET INTERSECTION IMPROVMENTS

LEON COUNTY

04 NOV 2011

WATER & SEWER PAY ITEM CLARIFICATIONS

ITEM No. 6-001 ADJUST WATER VALVE BOX

This item consists of adjusting valve box castings to finished grade, including concrete collar in accordance with **Section 6 Water Distribution Systems** of the City of Tallahassee's *Standard Specifications for the Design and Construction of Water and Wastewater Facilities*, June 29, 2010 edition.

Measurement and payment will be on a per-each basis, completed and accepted.

**ITEM No. 6-003 WATER SERVICE REPLACEMENT AND METER RELOCATION, (F&I)
0.75 inch HDPE**

This item consists of furnishing and installing water services on an existing or new water main on a per-each method of measurement, the number of each indicated in the Summary of Bid Items. This item includes water services, 3/4", and water meter boxes. HDPE service piping is permissible in-lieu of copper. Meters will be furnished by the City, as needed. This item does not include commercial water meter vaults. This item includes tapping of the existing or new water main, removing the existing meter box and lid and old service line and replacing with a new traffic-bearing meter box and lid, transferring the water service to the meter, adjusting the meter box and meter vertically and horizontally as required, and installing a new service line from the new meter box to the property line in accordance with **Section 5 Excavating, Backfill, and Compacting for Utilities; and Section 6 Water Distribution Systems** of the City of Tallahassee's *Standard Specifications for the Design and Construction of Water and Wastewater Facilities*, June 29, 2010 edition.

The new traffic-bearing meter box and lid shall be replaced to finished grade and relocated to a proper location within the right-of-way, as directed by the Engineer. The disturbed

area around the meter box, if within a grassed area, will be replaced with sod to match the existing grassing. If the meter is determined by the Engineer to be defective, it will be replaced with a new meter, furnished by the City. It will be the Contractor's responsibility to relocate existing backflow prevention devices on existing water services between the meter and property line to proper locations, as directed by the Engineer. Should any additional services be found necessary, they will be added to the Contract at the same unit price. Likewise, should any of the listed services not be necessary, they will be removed from the Contract without having any effect on the unit price.

Measurement and payment will be in accordance with **Section 6.1.6 Basis of Payment** of the City of Tallahassee's *Standard Specifications for the Design and Construction of Water and Wastewater Facilities*, June 29, 2010 edition and will include any costs for pipe, equipment, materials and labor, deep cut connections, all boring, encasement, crossing diagonal utilities, temporary traffic controls, and support for these laterals, excavation, suitable backfill, and all temporary and permanent paving related items (saw-cut, base, asphalt, concrete, sidewalk, driveways, curb, and gutter) and all other work associated with this item.

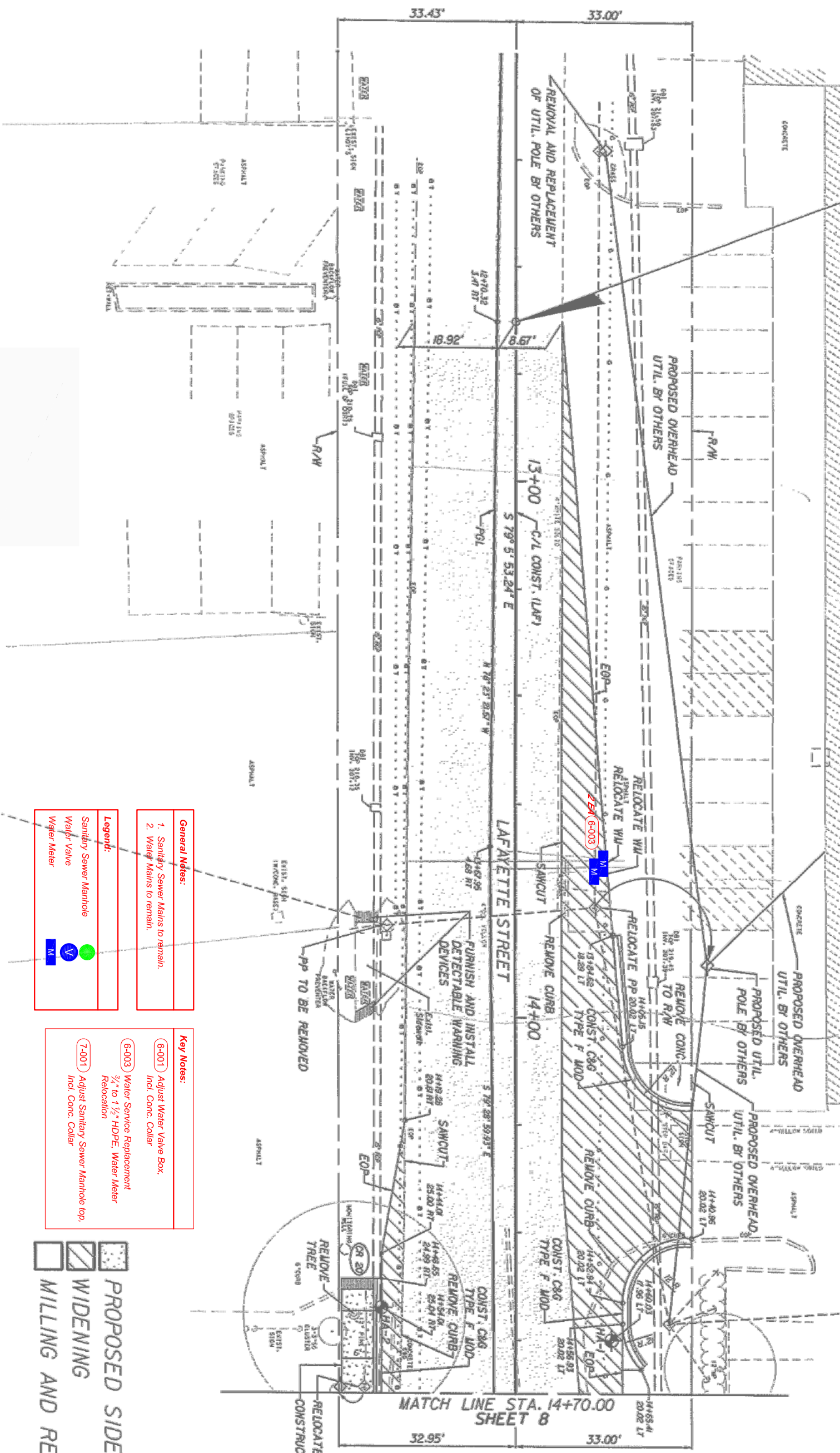
ITEM No. 7-001 ADJUST SANITARY MANHOLE TOP

This item consists of adjusting ring and cover castings to finished grade, including concrete collar in accordance with **Section 7 Sanitary Sewers** of the City of Tallahassee's *Standard Specifications for the Design and Construction of Water and Wastewater Facilities*, June 29, 2010 edition.

Measurement and payment will be on a per-each basis, completed and accepted.

ONE STORY BLDG

BEGIN PROJECT STA. 12+70.32



MATCH LINE STA. 14+00.00 SHEET 8

- General Notes:**
- Sanitary Sewer Mains to remain.
 - Water Mains to remain.
- Legend:**
- Sanitary Sewer Manhole
 - Water Valve
 - Water Meter

- Key Notes:**
- (G-001) Adjust Water Valve Box Incl. Conc. Collar
 - (G-003) Water Service Replacement 3/4" to 1 1/2" HDPE Water Meter Relocation
 - (T-001) Adjust Sanitary Sewer Manhole top, Incl. Conc. Collar

- PROPOSED SIDEWALK
- WIDENING
- MILLING AND RESURFACING

DATE	BY	DESCRIPTION	DATE	BY	DESCRIPTION

City of Tallahassee
 Your Own Utilities®
 WATER RESOURCES ENGINEERING
 300 S. ADAMS ST. B-26
 TALLAHASSEE, FL. 32301
 Tel. (850) 891-6155



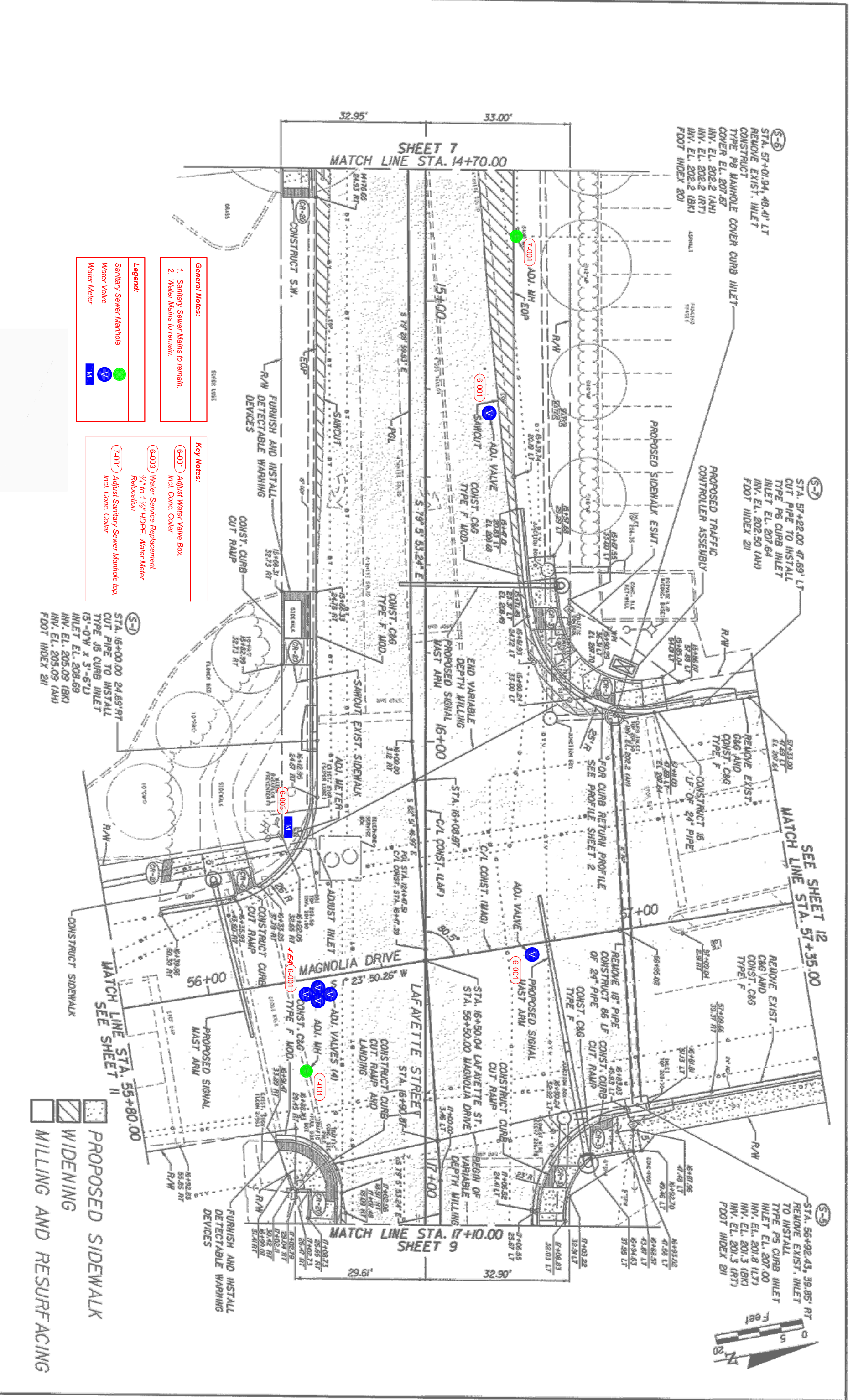
PLAN
LAFAYETTE STREET

SHEET NO. **U-1**

DATE	BY	DESCRIPTION

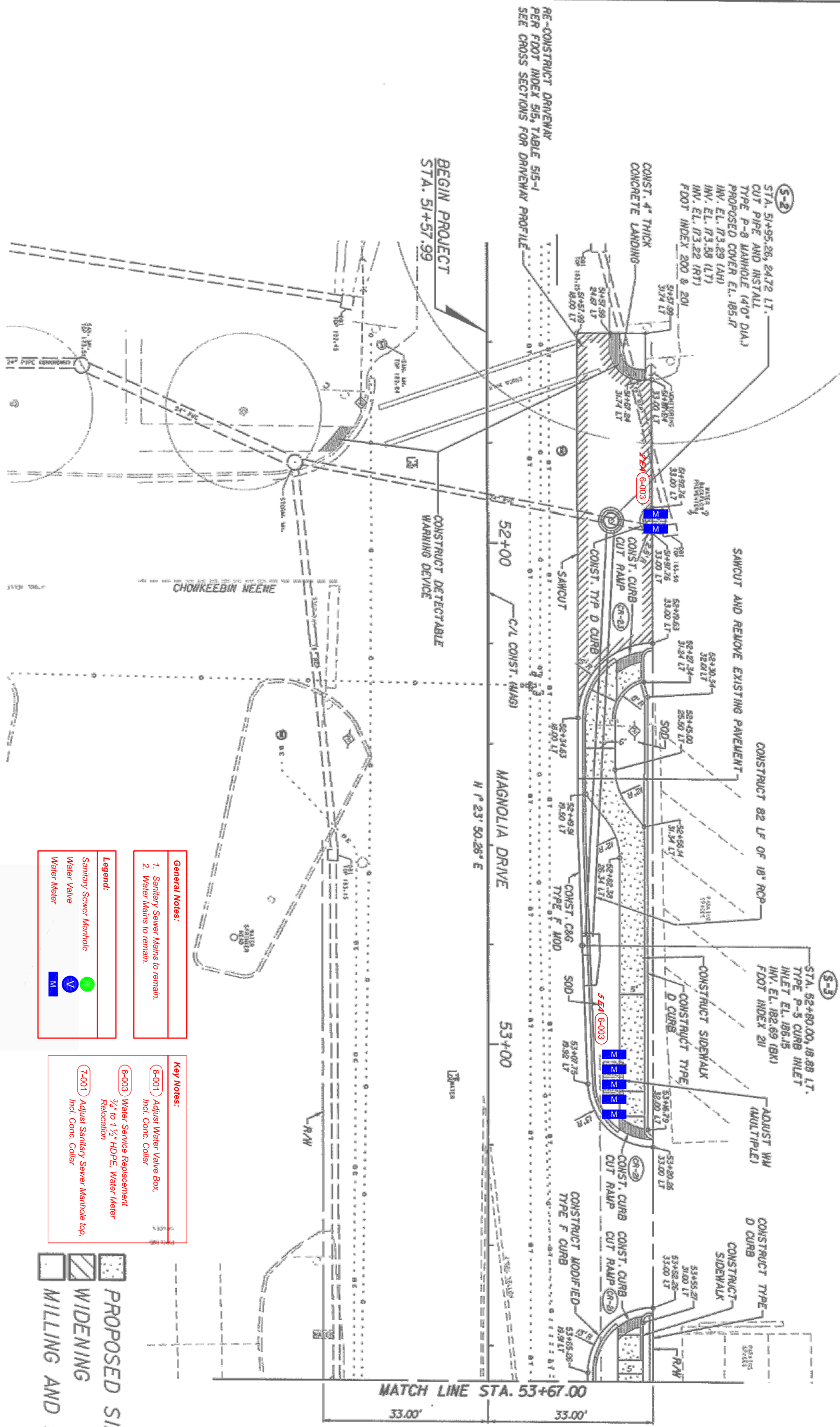
City of Tallahassee
 Your Own Utilities
 WATER RESOURCES ENGINEERING
 300 S. ADAMS ST. B-26
 TALLAHASSEE, FL 32301
 Tel. (850) 891-6155

CITY OF
TALLAHASSEE
 PLAN
LAFAYETTE STREET



- General Notes:**
- Sanitary Sewer Mains to remain.
 - Water Mains to remain.
- Legend:**
- Sanitary Sewer Manhole
 - Water Valve
 - Water Meter
- Key Notes:**
- (6-001) Adjust Water Valve Box, Incl. Conc. Collar
 - (6-003) Water Service Replacement 3/4" to 1 1/2" HDPE, Water Meter Relocation
 - (7-001) Adjust Sanitary Sewer Manhole top, Incl. Conc. Collar





RE-CONSTRUCT DRIVEWAY
PER FDOT INDEX 915, TABLE 515-1
SEE CROSS SECTIONS FOR DRIVEWAY PROFILE

BEGIN PROJECT
STA. 51+57.99

CONSTRUCT DETECTABLE
WARNING DEVICE

52+00 C/L CONST. (MAG)

MAGNOLIA DRIVE
N 23° 50.26' E

53+00

MATCH LINE STA. 53+67.00

- General Notes:**
- Sanitary Sewer Mains to remain.
 - Water Mains to remain.
- Legend:**
- Sanitary Sewer Manhole
 - Water Valve
 - Water Meter

- Key Notes:**
- (6-001) Adjust Water Valve Box Incl. Conc. Collar
 - (6-003) Water Service Replacement 3/4" to 1 1/2" HDPE Water Meter
 - (7-001) Adjust Sanitary Sewer Manhole top, Incl. Conc. Collar

- PROPOSED SIDEWALK
- WIDENING
- MILLING AND RESURFACING

DATE	BY	DESCRIPTION

City of Tallahassee
Your Own Utilities®

WATER RESOURCES ENGINEERING
300 S. ADAMS ST. B-26
TALLAHASSEE, FL. 32301
Tel. (850) 891-6155



PLAN
MAGNOLIA DRIVE

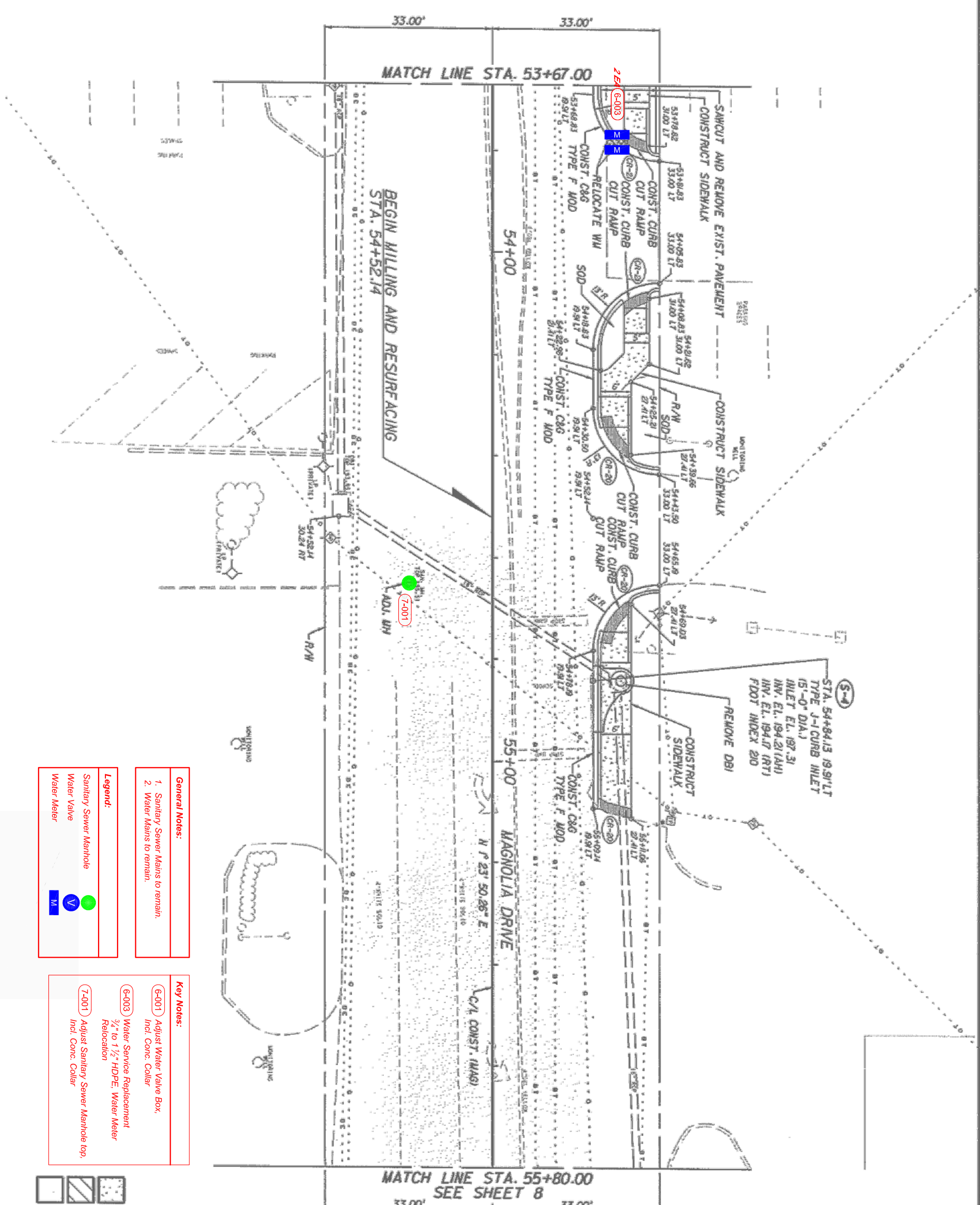
SHEET NO.
U-3

DATE	BY	DESCRIPTION	REVISIONS	DATE	BY	DESCRIPTION

City of Tallahassee
 Your own utilities
 WATER RESOURCES ENGINEERING
 300 S. ADAMS ST. B-26
 TALLAHASSEE, FL. 32301
 Tel. (850) 891-6155



CITY OF TALLAHASSEE
 PLAN
 MAGNOLIA DRIVE
 SHEET NO. U-4



- General Notes:**
- Sanitary Sewer Mains to remain.
 - Water Mains to remain.
- Legend:**
- Sanitary Sewer Manhole
 - Water Valve
 - Water Meter

- Key Notes:**
- (G-001) Adjust Water Valve Box Incl. Conc. Collar
 - (G-003) Water Service Replacement 3/4" to 1 1/2" HDPE Water Meter Relocation
 - (T-001) Adjust Sanitary Sewer Manhole top, Incl. Conc. Collar

- PROPOSED SIDEWALK
- WIDENING
- MILLING AND RESURFACING

